

PART OF THE NE. 1/4, OF SECTION 25, T.6N., R.2W., S.L.B. & M.

805

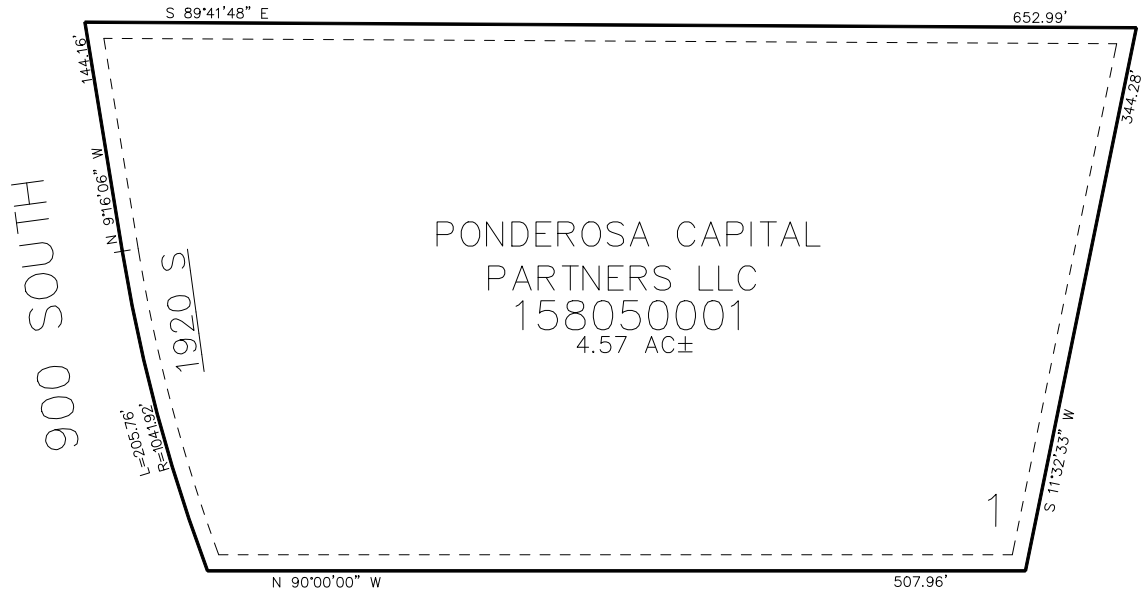
PONDEROSA SUBDIVISION

IN WEST HAVEN CITY

TAXING UNIT: 277

SCALE 1" = 60'

SEE PAGE 66



SEE PAGE 66

10' UTILITY & DRAINAGE EASEMENTS EACH
SIDE OF PROPERTY LINES AS INDICATED
BY DASHED LINES EXCEPT AS OTHERWISE
SHOWN.

FOR COMPLETE SURVEY DATA SEE
ORIGINAL DEDICATION PLAT IN
BOOK 94, PAGE 71 OF RECORDS.